

Compost Card Sort

Make copies for each group and cut out the cards on the dotted lines. Have students sort them into two piles: ingredients that can be composted and those ingredients that should go into the trash. Another option for virtual learning is to have youth label each card as "trash" or "compost".



Dead Leaves



Coffee Grounds



Newspaper



Weeds



Fish



Eggshells





Manure



Ashes



Lint



Pet Waste



Cat Litter



Diseased Plants



Cheese



Meat





Yogurt



Milk



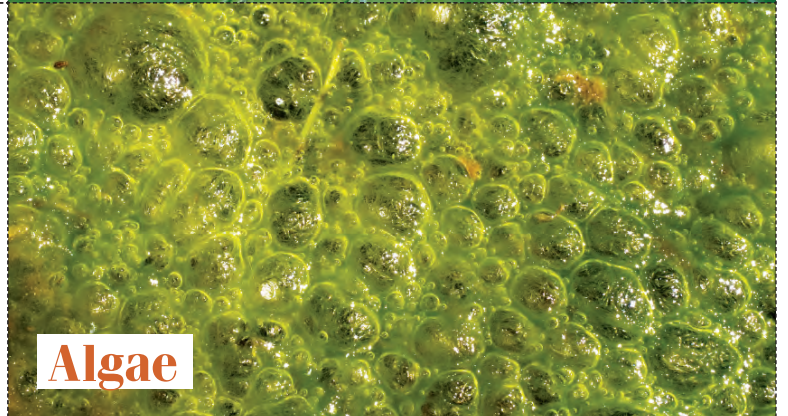
Potato Chips



Pine Needles



Hair



Algae



Cardboard



Sawdust

