

## APPENDIX A: RAINBOX CONSTRUCTION

### Materials List (Quantity in parentheses)

- (1)  $\frac{7}{16}$ " Thick Plywood, 41" x  $9\frac{3}{8}$ "
- (2) 1" x 3" Boards, 41" long
- (1) 1" x 2" Board, 7  $\frac{7}{8}$ " Long
- (1) 1" x 3" Board, 7  $\frac{7}{8}$ " Long
- (2)  $\frac{7}{16}$ " Thick Plywood, 1" x  $\frac{43}{16}$ "
- (1)  $\frac{7}{16}$ " Thick Plywood, 9  $\frac{3}{8}$ " x 1  $\frac{5}{8}$ "
- (1)  $\frac{3}{4}$ " Diameter Plastic Outfall Tube
- 1  $\frac{1}{2}$ " Long, Small Wood Nails
- 1" Long, Small Wood Nails
- Polyurethane Wood Sealant W/ Gloss Finish

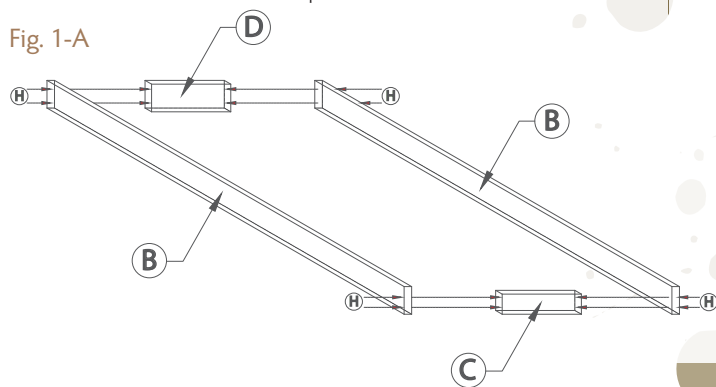
### Tools List

- Hammer
- Wood Glue
- Sand Paper
- Black Marker
- 2" Paintbrush

### Instructions

1. Cut all boards to size per materials list and lightly sand.
2. Using marker & straight edge, draw solid black line 2" from bottom of boards "B" & "D".
3. Assemble frame as shown in Fig. 1-A using wood glue & nails specified.
  - a. Bottom of boards "C" & "D" shall be flush with bottom of the "B" boards.
  - b. Top of "D" board shall be flush with top of "B" boards.
  - c. Top of "C" board shall be flush with line drawn from Step 2.

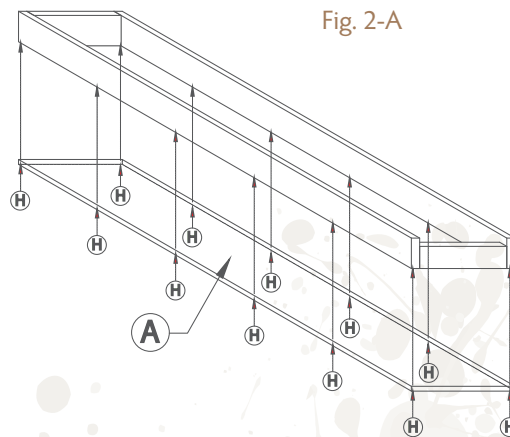
Fig. 1-A



The rainboxes can be used for many years once they have been built and provide a scaled way to demonstrate erosion principles and practices.

4. Attach board "A" to bottom of frame built in step 3 as shown in using wood glue & nails specified Fig. 2-A.

Fig. 2-A



5. Attach boards "E" at an angle as shown in Fig. 3-A using wood glue & nails specified.
  - a. Outer edge of boards "E" shall be flush with top of board "C".
  - b. Inner edge of boards "E" shall be angled as such the bottoms are 1  $\frac{1}{2}$ " from bottom of box and having roughly a 1" space between them.

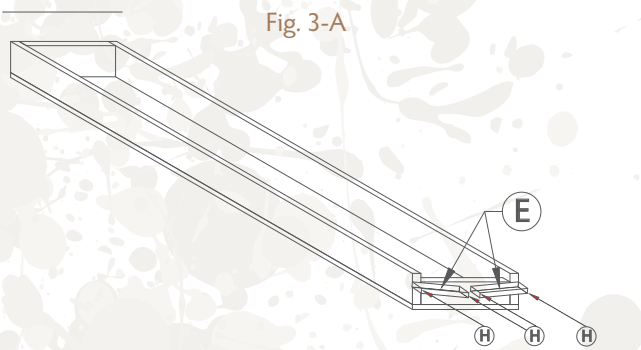


Fig. 3-A

6. Attach board "F" to boards "E" as shown in Fig. 4-A
  - a. Top of board "F" shall be flush with top of box (boards "B" & "D"). Using wood glue & nails specified

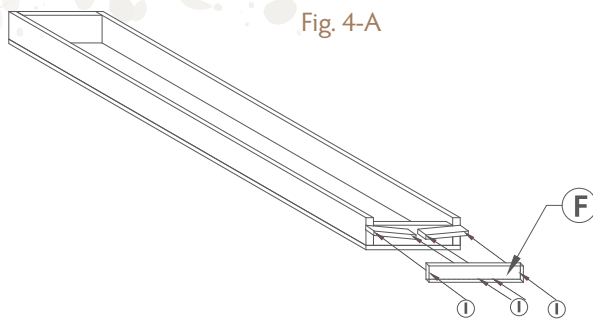


Fig. 4-A

7. Insert plastic outfall fitting in 1" opening between boards "E". Insert 1/2" wood screw into board "F" to secure and fill edges with wood glue.
8. Apply polyurethane finish to entire box using a 2" paintbrush.
9. Box assembled w/overall dimensions is shown in Fig. 5-A.

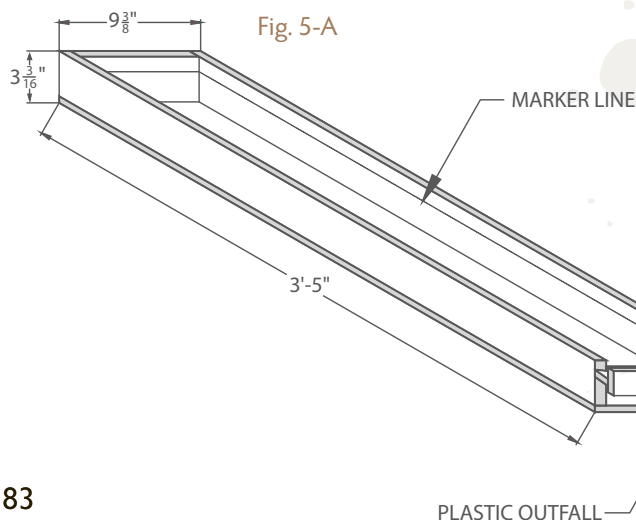
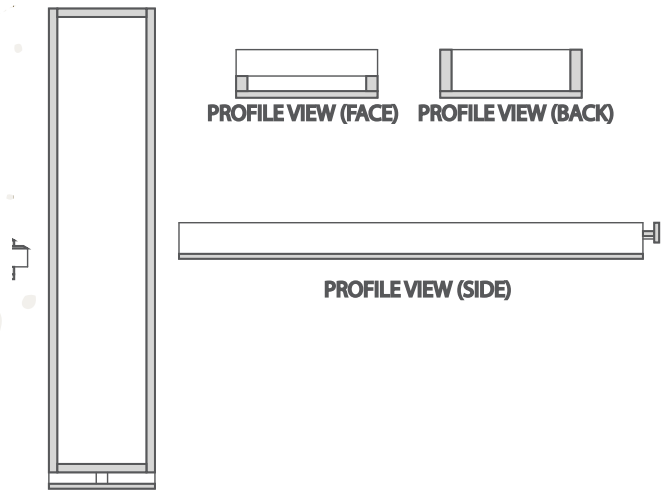


Fig. 5-A

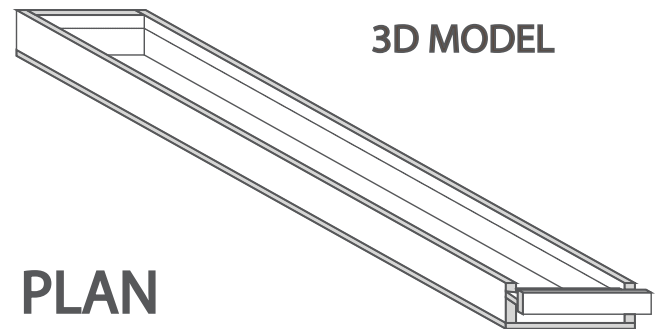
PLAN VIEW (TOP)



PROFILE VIEW (FACE)

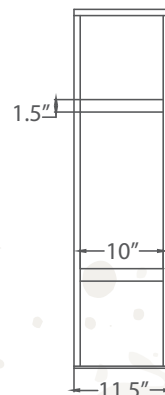
PROFILE VIEW (BACK)

PROFILE VIEW (SIDE)



3D MODEL

PLAN



## Rainbox Stand Design

Dimensions and plans for building a rainbox stand with slope.

PROFILE

