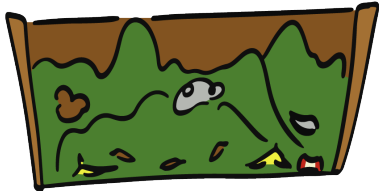


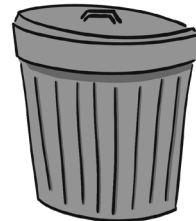
Compost Sort

Sort the items at the bottom of the page into the correct groups "Compost" or "Trash." For example, Dead Leaves would go into the Compost list.

Compost



Trash *



Dead Leaves

Coffee Grounds

Meat

Milk

Manure

Newspaper

Fish

Cheese

Eggshells

Pet Waste



Coffee Grounds



Manure



Meat



Newspaper (No Glossy Inserts)



Milk



Dead Leaves



Eggshells



Fish



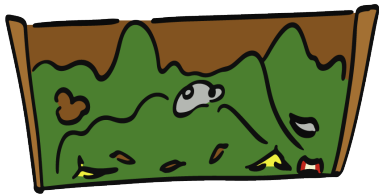
Cheese



Pet Waste

*While some of these items can be composted using commercial methods, they should NOT be composted at home.

Compost



Trash *



Potato Chips

Sawdust

Yogurt

Cat Litter

Cardboard

Pine Needles

Weeds

Diseased Plants

Hair



Yogurt



Potato Chips



Untreated Sawdust



Cardboard



Cat Litter



Weeds



Pine Needles



Hair



Diseased Plants

**While some of these items can be composted using commercial methods, they should NOT be composted at home.*