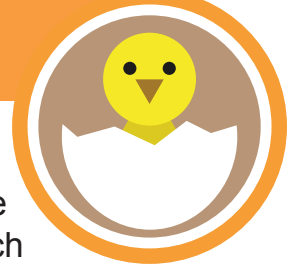


Chicks in Space!



Your friend has some eggs in an incubator. Ten eggs look ready to hatch. Your friend has asked you for help with setting up a brooder box. They have collected several different boxes that might work, but they do not know which box to use.

Your group will need:

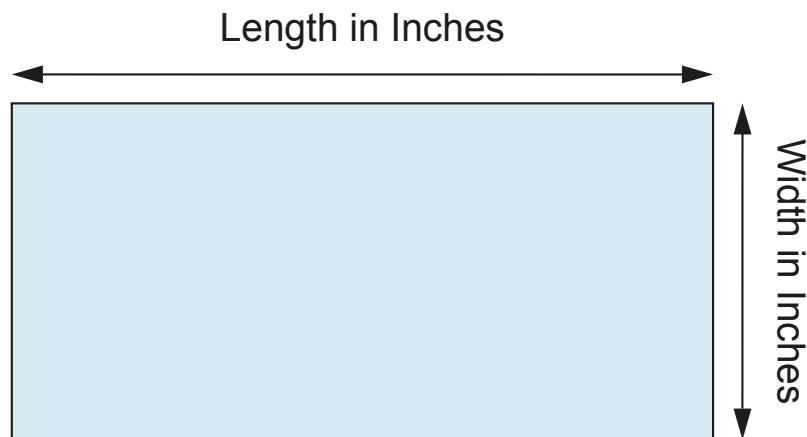
- At least 10 “Chickspaces”
- Two to three boxes
- A yardstick

Work with your group to figure out how many chicks can fit in each of the boxes. Remember:

- A Chickspace may touch another Chickspace, but one Chickspace may not overlap another.
- Chickspaces must lay flat on the bottom of the box to count.
- You can mix and match Chickspace shapes.

After your group has finished measuring the Chickspace for each box, use the yardstick to measure the length and width of the box floor.

When you have filled the box with as many Chickspaces as possible, draw a picture on the next page to show how you filled it. Then, use the yardstick to measure the length and width



of the box floor to the nearest inch. You can use the picture to help you.

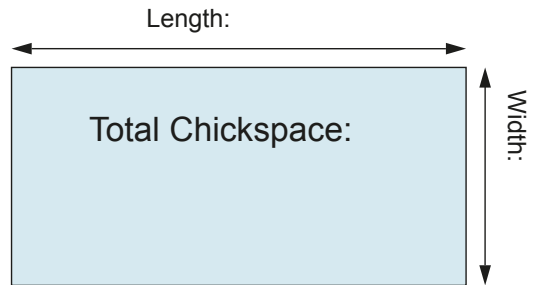
When you are finished measuring, you will write a letter to your friend. There may be some boxes that your group does not measure. That is okay. Just use the boxes your group does measure to help you write your letter.

Chicks in Space!



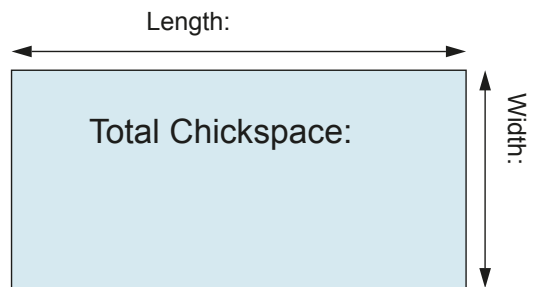
Box:

My Drawing:



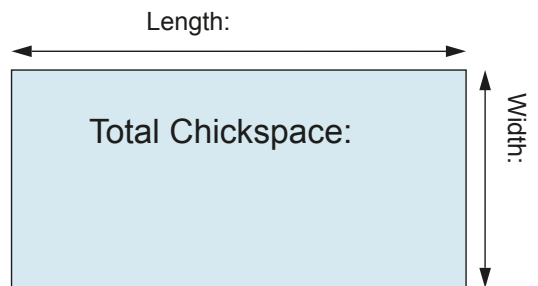
Box:

My Drawing:



Box:

My Drawing:



Chicks in Space!



Write a note to your friend explaining how to set up a brooder box. Make sure to answer the following questions:

1. Will your friend be able to fit all ten of their chicks into one box? Why or why not?
2. Which box or boxes would you recommend that they use for their chicks?
3. What else will they need to include in their brooder box or boxes?



NC STATE

EXTENSION