

## Find Your Flock: Go Fish



The chicks had so much fun playing together, but now it is time for them to go back to their own flocks. Can you match each chick to its mama?



### You will need:

- Find Your Flock cards (1 set per pair)
- Find Your Flock Reflection sheets (1 per youth)
- Writing utensils (1 per youth)

This game is similar to the classic card game, “Go Fish”. The goal is to get as many matches as possible. For this game, a “match” is an adult and a chick from the same breed.

### How to play:

1. Shuffle the deck.
2. Deal 7 cards to each player.
3. Spread the remaining cards out, face down, in the “pasture”.
4. If a player has any pairs in their hands, they should lay them face up on the table before play starts. A pair is a grown chicken and a baby chick from the same breed.
5. The player to the dealer’s right (“A”) begins the game by asking another player (“B”) if they have a card.
  - a. Players may not say the name of the chicken breed. Instead, they have to ask using features of the chicken. For example, instead of asking, “Do you have a cochin?” a player can ask, “Do you have a chicken with feathered legs?”
  - b. A player must have a matching card in their hand. For instance, if a player does not have any cards showing a chicken with feathered legs, they may not ask for feathered legs.
6. If “B” has any cards that match “A”’s request, they must hand the cards over to “A.”
  - a. It is possible for “B” to hand over cards and for “A” to NOT end up with a pair. For instance, “A” has a Silkie and asks for “feathered legs.” “B” hands over two cards showing breeds with feathered legs that are NOT Silkie chickens.
    - i. If “A” has any new pairs, they may lay them down and go again.
    - ii. If “A” does not end up with a pair, their turn is over.
7. If “B” does not have any matching cards, they say “Find Your Flock.” “A” has to draw a card from the “pasture” and their turn ends.



8. If “A” happens to draw a card from the pasture that makes a pair with one of their cards, they can lay the pair down on the table, but they do not get another turn.
9. Play continues clockwise. If a player runs out of cards, they may draw seven new cards from the pasture.
10. The game ends when there are no more cards left. The winner is the person with the most pairs.

**Need help?** Here are some ideas for questions you can ask:

1. Do you have any chickens with a \_\_\_\_\_ comb?
2. Do you have any chickens with \_\_\_\_\_ legs?
3. Do you have any chickens with a(n) \_\_\_\_\_-colored beak?
4. Do you have any chickens with a crest?
5. Do you have any chickens with a muff?

## Find Your Flock: Memory



The chicks had so much fun playing together, but now it is time for them to go back to their own flocks. Can you match each chick to its mama?



### You will need:

- Find Your Flock cards (1 set per pair or 1 set per person for solo play)
- Find Your Flock Reflection sheets (1 per youth)
- Writing utensils (1 per youth)

This game follows the same rules as the classic card game, “Memory”.

### How to play:

1. Shuffle the deck.
2. Lay the cards out, face down, in a rectangle that is X rows tall and X columns wide.
3. The player to the dealer’s right (“A”) begins the game. “A” flips over any two cards in the rectangle.
4. If the cards are a match (baby chick and fully grown chicken of the same breed), then “A” keeps the cards and gets another turn.
5. If the cards are not a match, then “A” turns them face down again and their turn ends.
6. Play continues clockwise until all the cards have been matched.
7. The winner is the player with the most matches.

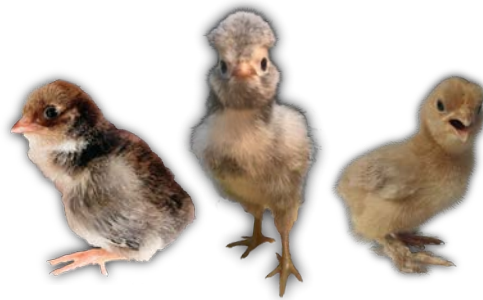
Need help? Here are some clues to help you match the pictures.

1. What color are the feathers? Do they have any patterns? Do you see a crest or muff? Are there any other unusual features?
2. What color are the legs? Do the legs have feathers? How many toes do you see?
3. What color is the beak?
4. What kind of comb can you see?

## Find Your Flock: Old Maid



The chicks had so much fun playing together, but now it is time for them to go back to their own flocks. Can you match each chick to its mama?



### You will need:

- Find Your Flock cards (1 set per small group)
- Find Your Flock Reflection sheets (1 per youth)
- Writing utensils (1 per youth)

This game follows the same rules as the classic card game, “Old Maid”.

### How to play:

1. Separate the chick cards and the hen cards.
2. Shuffle the chick cards and spread them on the table face down.
3. The player to the dealer’s left should pick one chick card and set it aside. No one should look at the card.
4. Mix the remaining chick cards and all of the hen cards back together and shuffle the deck well.
5. Deal out all of the cards. It is okay if some players have more or fewer cards than others.
6. Players should look at their own cards for matches (1 chick and 1 adult from the same breed). They should lay any matches they have face up on the table in front of them.
7. The dealer turns to the player on their left (Player 2). Player 2 may pick a card from the dealer’s hand and look at it (don’t show it to anyone else!).
8. If Player 2 now has a match, they may lay it face up in front of them.
9. Player 2 now turns to the player on their left (Player 3). Player 3 may pick a card from Player 2’s hand and look at it (don’t show it to anyone else!).
10. If Player 3 now has a match, they may lay it face up in front of them.
11. Play continues in this manner until all the possible matches have been made. The person left holding the last card is the broody old hen and is “out.”

Need help? Here are some clues to help you match the pictures.

1. What color are the feathers? Do they have any patterns? Do you see a crest or muff? Are there any other unusual features?
2. What color are the legs? Do the legs have feathers? How many toes do you see?
3. What color is the beak?
4. What kind of comb can you see?

## Find Your Flock: Spoons



The chicks had so much fun playing together, but now it is time for them to go back to their own flocks. Can you match each chick to its mama?

### You will need:

- Find Your Flock cards (1 set per group)
- “Worms” (can be pieces of elastic, chenille stems, rubber bands, pencils, etc.)
- Find Your Flock Reflection sheets (1 per youth)
- Writing utensils (1 per youth)



This game follows the same rules as the classic card game, “Spoons”.

### How to play:

1. Figure out how many people are playing. Players should sit in a circle.
2. Put one fewer worm than players in the center (the “garden”). For example, if 4 people are playing, put 3 worms in the garden. If 2 people are playing, put 1 worm in the garden. Every person in the circle should be able to reach the worms easily.
3. Shuffle the deck.
4. Each person gets two cards. A player can not hold more than two cards at any point in the game.
5. The rest of the cards go in a stack next to the dealer. The dealer begins the game by taking the top card from the stack.
6. The dealer now has three cards, but can only keep two of them. So, the dealer passes a card to the player on their left (“Player 2”). It can be the card they just drew or one that was already in their hand.
7. Player 2 (the person on the dealer’s left) now has three cards, but can only keep two of them. So, they have to pass a card to Player 3 (the next player on their left). It can be the card from the dealer or one they already had in their hand.
8. This pattern continues around the circle, except Player 4 (or whoever is the last player in the circle) puts their extra cards in a discard pile next to the dealer. If the stack runs out, the dealer can start drawing from the discard pile.
9. Play continues as fast as possible until someone has a match (an adult and a chick of the same breed). At that point, they lay down their match and grab a worm from the garden. Everyone else has to crow like a rooster and try to grab one of the remaining worms. The player who goes hungry is “out”.

Need help? Here are some clues to help you match the pictures.

1. What color are the feathers? Do they have any patterns? Do you see a crest or muff? Are there any other unusual features?
2. What color are the legs? Do the legs have feathers? How many toes do you see?
3. What color is the beak?
4. What kind of comb can you see?

This project would not have been possible without the generous support of chicken experts, farmers, and breed aficionados across the country and around the world. We would like to give special thanks to all those who shared their time, feedback, videos, and photos with us:



**Ameraucana**  
*John Blehm*

**Australorp**  
\*

**Ayam Cemani**  
*Dr. Mary Kroner and Family*

**Barbu d'Uccle**  
*Mindy Hodgin*

**Barnevelder**  
*Talour Hawley*

**Brahma**  
*Livestock Conservancy*

**Buckeye**  
*Kara and Aaron Baker at Baker's  
Acres Backyard Farm*

**Chantecler**  
*Livestock Conservancy*

**Cochin**  
*Kathy Stevenson at Hawthorne Hill  
Poultry Farm*

**Cornish**  
*Livestock Conservancy*  
*Amy Obermiller*

**Deleware**  
*Livestock Conservancy*

**Dominique**  
*Shane Manuel*

**Faverolles**  
\*

**Hamburg**  
*Livestock Conservancy*

*Rik Deihls*

**Houdan**

*Livestock Conservancy*

**Jersey Giant**  
*Kathy Rowe at Sturgeon Creek Farm*

**La-Flèche**  
*Ron Seagrave at Seagrave-Williams  
Farm*

**Langshan**  
*Livestock Conservancy*

*Wilbur Hanley*

**Leghorn**  
*North Carolina State University Poultry  
Department*

**Marans**  
*Heather Jaunakais at Rising Phoenix  
Farms*

**Naked Neck**  
\*

**New Hampshire Red**  
*Livestock Conservancy*  
*Edgar Mongold*

**Onagadori**  
*Fabian Schenkel*

**Orpington**  
*Amy Obermiller*

**Phoenix**  
*Livestock Conservancy*

**Plymouth Rock**  
*Livestock Conservancy*  
*North Carolina State University Poultry  
Department*

**Polish**  
*Livestock Conservancy*

*Yvette Rodriguez*

**Rhode Island Red**  
*Livestock Conservancy*

*North Carolina State University Poultry  
Department*

**Rosecomb**  
*Lori Cary*

**Sebright**  
\*

**Serama**  
*Krissy McLaughlin at the Serama  
Council of North America*

**Silkie**  
*Rachael Stanczak at Silkie Island*

**Swedish Flower Hen**  
*Talour Hawley*

**Wyandotte**  
*Ozark Akerz Regenerative Farms*  
*Amy Obermiller*



**NC STATE**

**EXTENSION**

*This side is left intentionally blank*





*Adult Buckeye*



*Adult Ameraucana*



*Adult Ayam Cemani*



*Adult Barbu d'Uccle*



*Adult Barnevelder*



*Buckeye Chick*



*Ameraucana Chick*



*Ayam Cemani  
Chick*

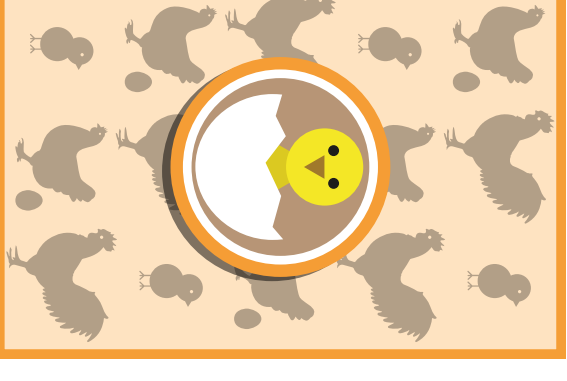
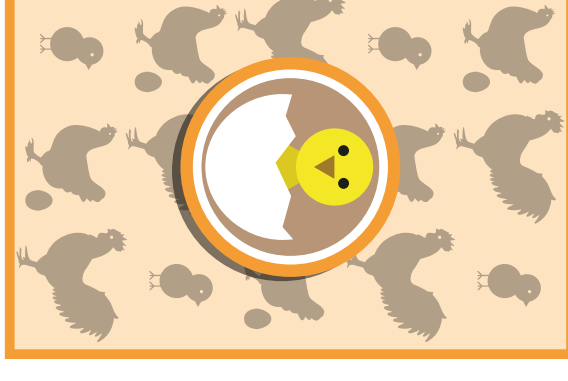
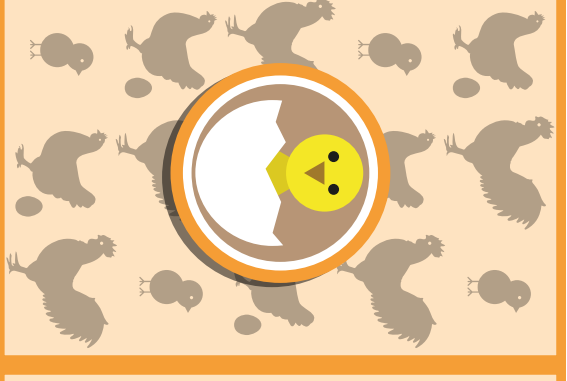
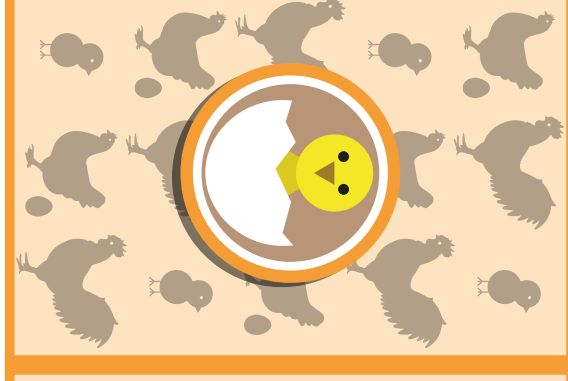
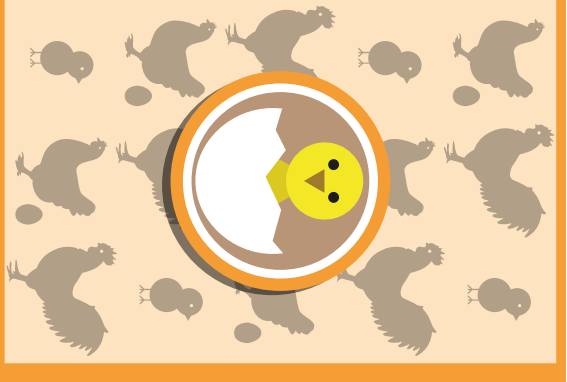
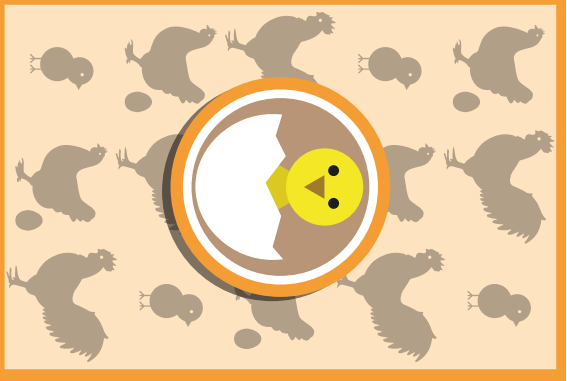
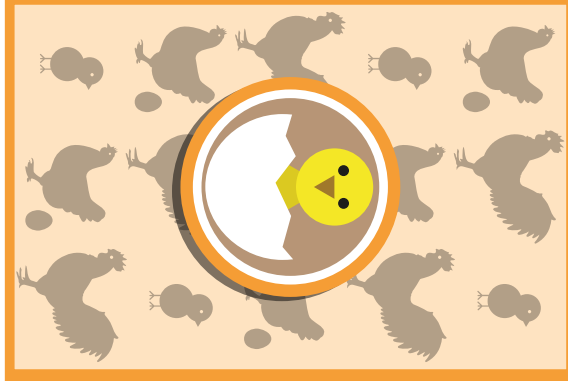
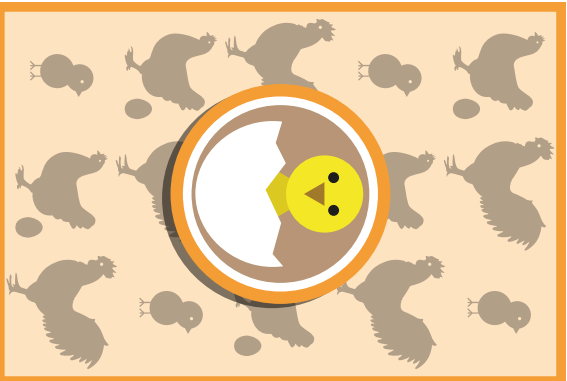
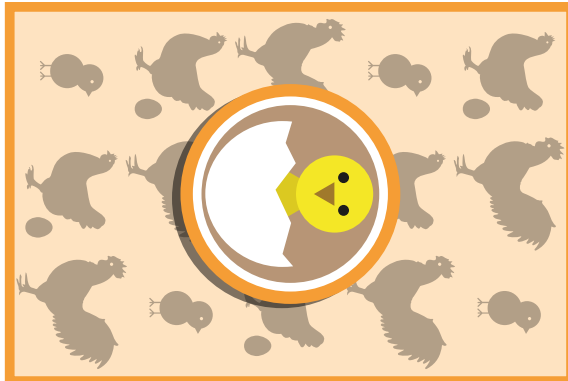


*Barbu d'Uccle Chick*



*Barnevelder Chick*







Adult La Flèche



Adult Hamburg



Adult Dominique



Adult Cochin



Adult Cornish



La Flèche Chick



Hamburg Chick



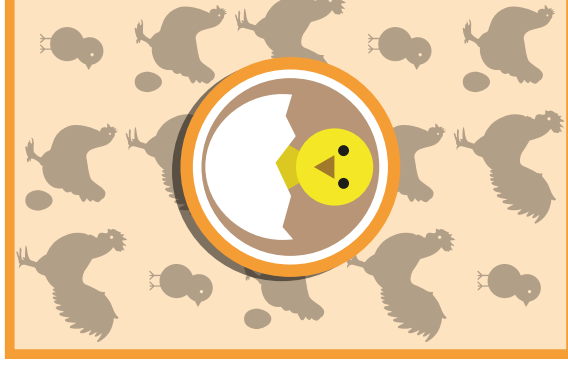
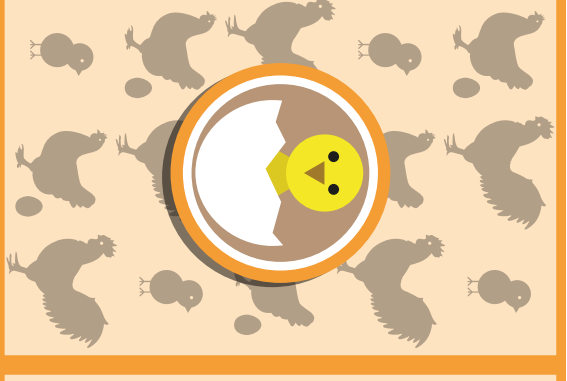
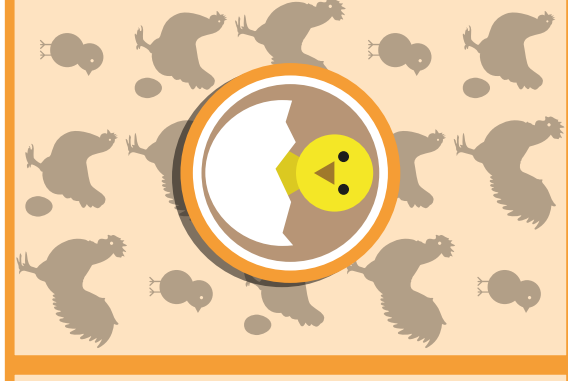
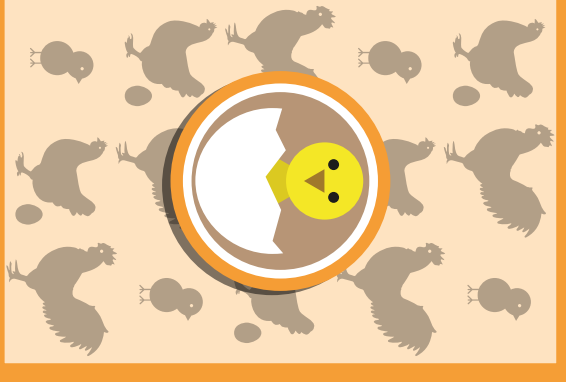
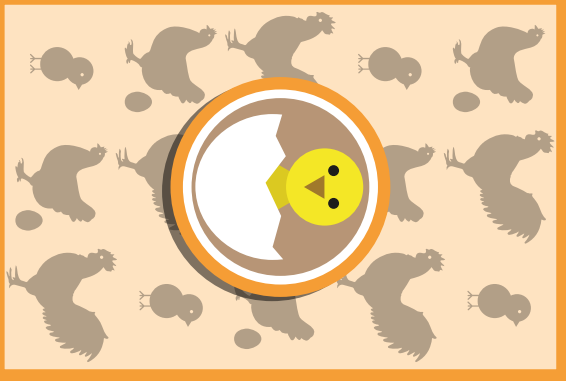
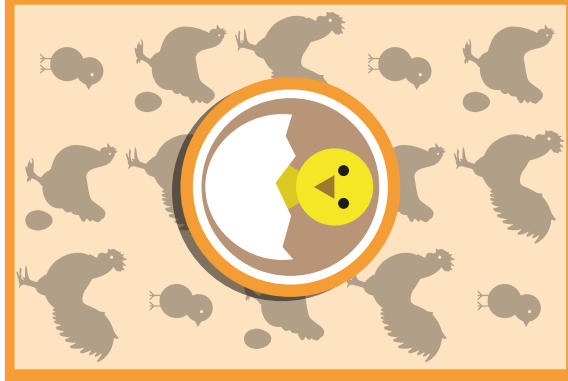
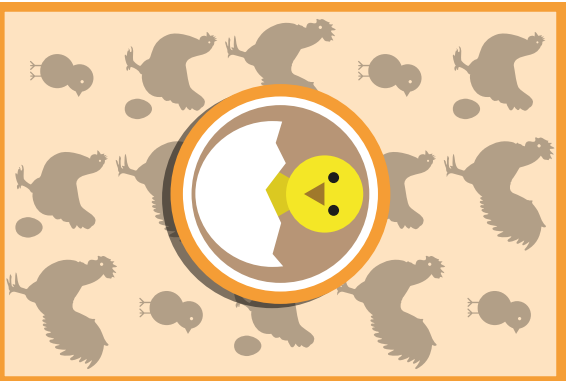
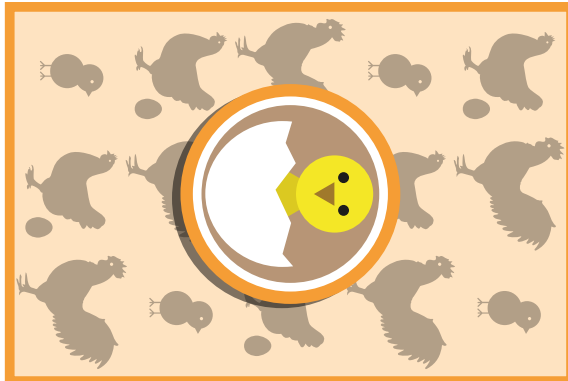
Dominique Chick



Cochin Chick



Cornish Chick





Adult New  
Hampshire



Adult Marans



Adult Jersey Giant



Adult Langshan



Adult Leghorn



New Hampshire  
Chick



Marans Chick



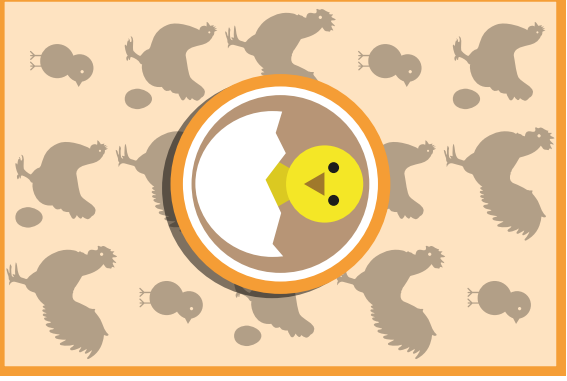
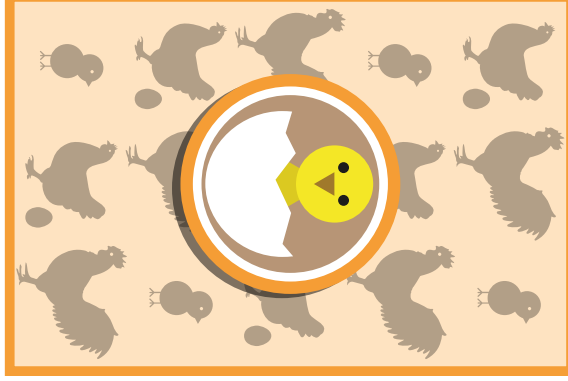
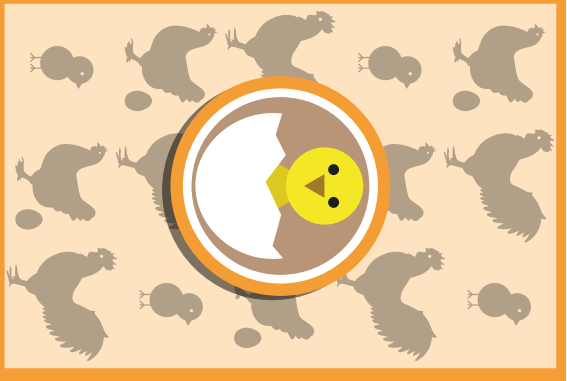
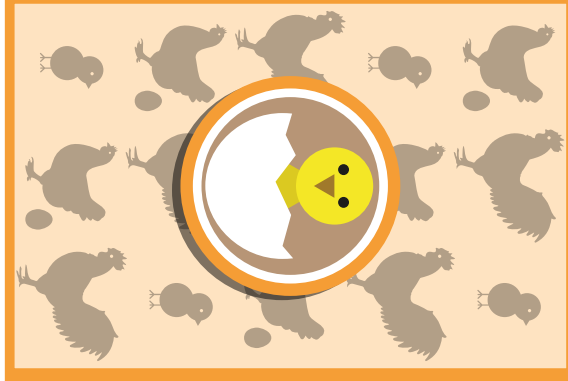
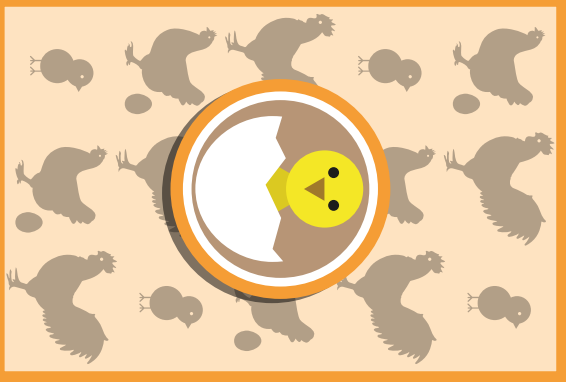
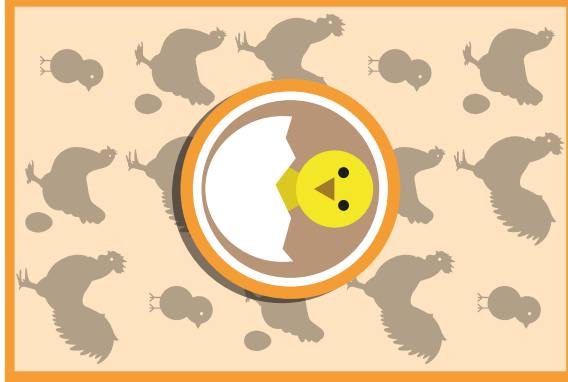
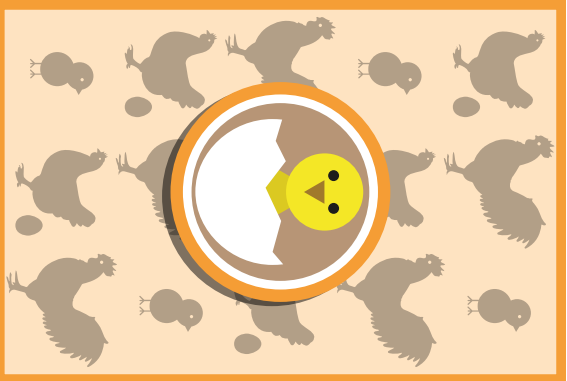
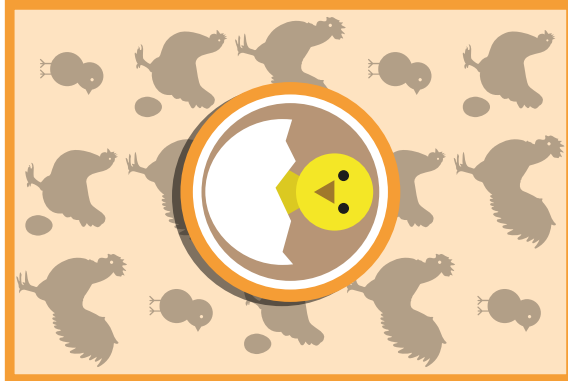
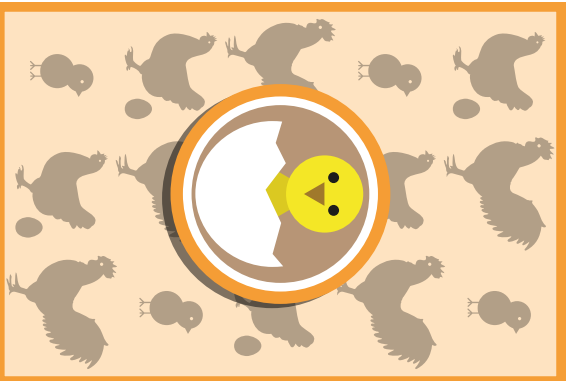
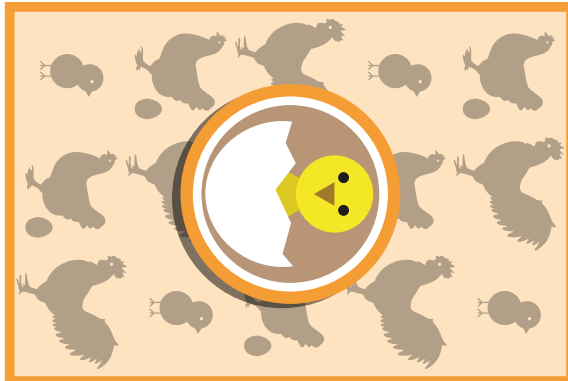
Jersey Giant Chick



Langshan Chick



Leghorn Chick







Adult Serama



Serama Chick



Adult Plymouth  
Rock



Plymouth Rock  
Chick



Adult Polish



Polish Chick



Adult Rhode  
Island Red



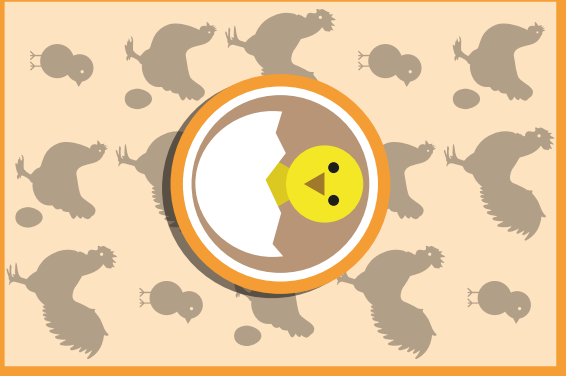
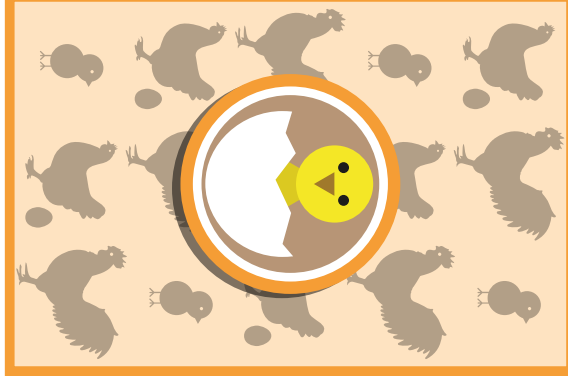
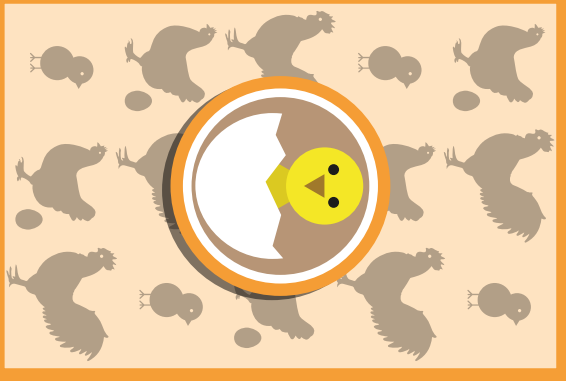
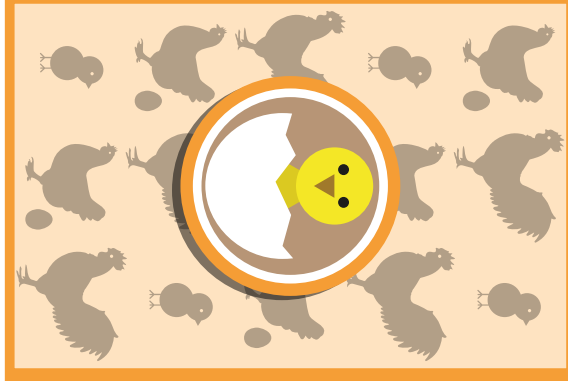
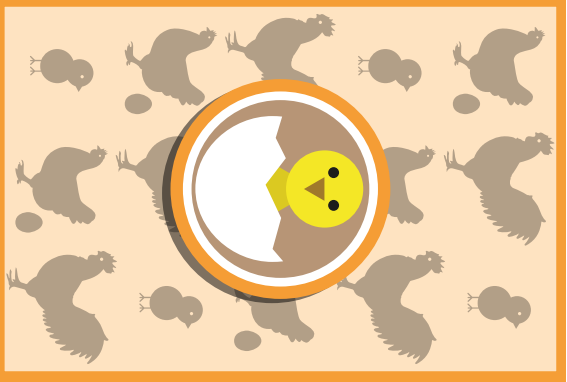
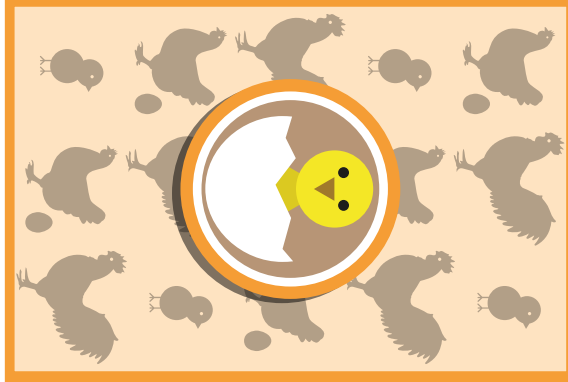
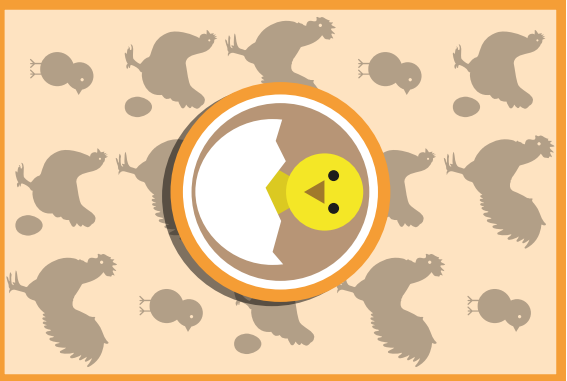
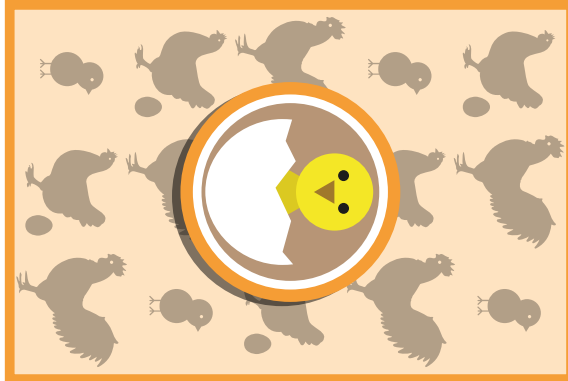
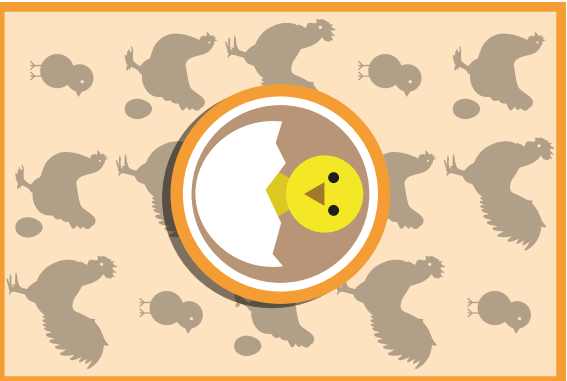
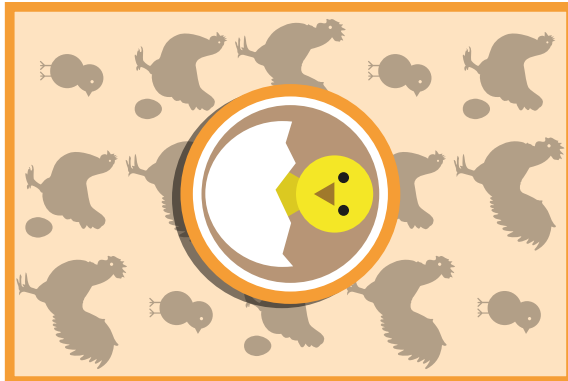
Rhode Island  
Red Chick



Adult Orpington



Orpington Chick



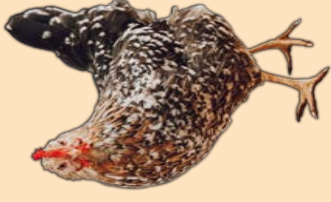




*Adult Wyandotte*



*Silver-Laced  
Wyandotte Chick*



*Adult Swedish  
Flower Hen*



*Swedish Flower  
Hen Chick*



*Adult Silkie*



*Silkie Chick*



*Adult Faverolles*



*Faverolles Chick*

